

Callahan Community Physicians

Click on the physician's name or page number below to view their individual profile listing.

<u>Physician</u>	<u>Page</u>
Matthew B. Albright, MD	2
Kristin C. Bains, MD	3
Mark Bearman, MD	4
L. Dale Brown, MD	5
Ashley Dahl, MD	6
Susan Eiland, MD	7
Frederick J. Elsas, MD	8
Jeffrey J. Fuller, MD	9
Kathleen Gee, MD	10
Sarah J. Hays, MD	11
Christopher L. Kelly, MD	12
Stephen J. Kelly, MD	13
John A. Long, MD	14
Marc A. Michelson, MD	15
Robert E. Morris, MD	16
Sara M. Mullins, MD	17
Matthew H. Oltmanns, MD	18
John S. Owen, MD	19
John S. Parker, MD	20
Darrell Prestridge, DO	21
Mathew R. Sapp, MD	22
David A. Skier, MD	23
Andrew J. Velazquez, MD	24
Matthew G. Vicinanza, MD	25



Matthew B. Albright, MD

Overview

Specialties	Ophthalmology
Subspecialties	Cornea
Conditions & Treatments	Cornea, Ocular Surface and Anterior Segment; LASIK
Gender	Male

Credentials

Medical Education	Fellowship - Washington University Eye Center, 2009-2010 Residency - Case Western Reserve University, 2005-2009 Internship - Summa Health System, 2006-2006 Medical School - University of Alabama School of Medicine, 2005
--------------------------	--

Location

Clinic	250 State Farm Parkway Birmingham, AL 35209 (205) 943-4600
Hospital Affiliation	UAB Callahan Eye Hospital



Kristin C. Bains, MD

Clinical Instructor

Overview

Specialties	Ophthalmology
Subspecialties	Cornea
Conditions & Treatments	Refractive Error, Cataract Surgery and Cornea disease
Gender	Female

Credentials

Medical Education	Fellowship - Cullen Eye Institute/Baylor College of Medicine, 2010-2011 Residency - University of Alabama at Birmingham Callahan Eye Hospital, 2007-2010 Internship - Carraway Methodist Medical Center, 2006-2007 Medical School - University of Alabama School of Medicine, 2006
Membership	American Academy of Ophthalmology, Alabama Academy of Ophthalmology, American Society For Cataract and Refractive Surgery

Location

Clinic	1000 19th Street South Birmingham, AL 35205 (205) 930-0700
Hospital Affiliation	UAB Callahan Eye Hospital
Other Hospital Affiliation	UAB Hospital

Callahan Community Physician



Mark Bearman, MD

Overview

Specialties	Ophthalmology
Subspecialties	Comprehensive, Cornea
Conditions & Treatments	Cataract Surgeries, Oculoplastics
Gender	Male

Credentials

Medical Education	Fellowship - Pacific Ophthalmic Consultants, 1988-1989 Residency - Oschner Medical Foundation, 1985-1988 Internship - Baptist Health System, 1984-1985 Medical School - University of Alabama School of Medicine, 1984
Certifications	American Board of Ophthalmology
Membership	American Society of Cataract and Refractive Surgery

Location

Clinic	3240 Edwards Lake Parkway, Suite 100 Birmingham, AL 35235 (205) 949-2020
Hospital Affiliation	UAB Callahan Eye Hospital

Callahan Community Physician



L. Dale Brown, MD

Overview

Specialties	Ophthalmology
Subspecialties	Retina
Gender	Male

Credentials

Medical Education	Fellowship - Vitreoretinal Foundation/Eye Specialty Group, 2010-2012 Residency - University of Maryland, 2007-2010 Internship - Baptist Health System, 2005-2006 Medical School - University of Alabama School of Medicine, 2005
--------------------------	---

Location

Clinic	250 State Farm Parkway Birmingham, AL 35209 (205) 943-4600
Hospital Affiliation	UAB Callahan Eye Hospital

Callahan Community Physician



Ashley Dahl, MD

Overview

Specialties	Ophthalmology
Subspecialties	Comprehensive
Gender	Female

Credentials

Medical Education	Residency - University of Alabama at Birmingham Callahan Eye Hospital, 2009-2012 Internship - Baptist Health System, 2008-2009 Medical School - University of Alabama School of Medicine, 2008
--------------------------	--

Location

Clinic	1009 Montgomery Highway, Suite 200 Birmingham, AL 35216 (205) 397-9400
Hospital Affiliation	UAB Callahan Eye Hospital



Susan Eiland, MD

Assistant Professor

Overview

Specialties	Ophthalmology
Subspecialties	Comprehensive
Conditions & Treatments	General Ophthalmology and Cataract Surgery
Gender	Female

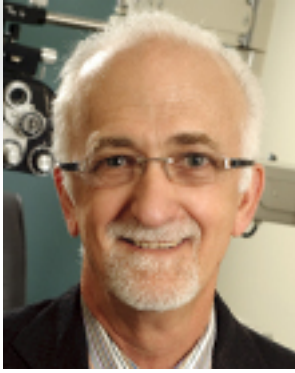
Credentials

Medical Education	Residency - University of Alabama at Birmingham Callahan Eye Hospital, 1977-1980 Internship - Carraway Methodist Medical Center, 1976-1977 Medical School - University of Alabama School of Medicine, 1976
Certifications	American Board of Ophthalmology

Location

Clinic	2700 10th Avenue South, Building 2, Suite 404 Birmingham, AL 35205 (205) 933-2340
Hospital Affiliation	UAB Callahan Eye Hospital
Other Hospital Affiliation	UAB Hospital

Callahan Community Physician



Fredreick J. Elsas, MD

Ophthalmologist-In-Chief at The Children's Hospital of Alabama
Clinical Associate Professor

Overview

Specialties	Ophthalmology
Subspecialties	Pediatric Ophthalmology and Strabismus
Conditions & Treatments	Pediatric Ophthalmology and Strabismus
Gender	Male

Credentials

Medical Education	Fellowship - Johns Hopkins Hospital, 1974-1975 Residency - Johns Hopkins Hospital, 1971-1974 Internship - Duke University Hospital, 1969-1970 Medical School - Duke University School of Medicine, 1968
Certifications	American Board of Ophthalmology
Membership	American Association For Pediatric Ophthalmology and Strabismus

Location

Clinic	1000 19th Street South Birmingham, AL 35205 (205) 930-0700
Hospital Affiliation	UAB Callahan Eye Hospital
Other Hospital Affiliation	UAB Hospital

Callahan Community Physician



Jeffery J. Fuller, MD

Overview

Specialties	Ophthalmology
Subspecialties	Retina
Conditions & Treatments	Retina and Vitreous conditions
Gender	Male

Credentials

Medical Education	Fellowship - University of Iowa Hospital and Clinics, 2005-2007 Residency - The Medical College of Georgia, 2002-2005 Internship - Baptist Medical Center-Montclair, 2001-2002 Medical School - University of Alabama School of Medicine, 2001
Certifications	American Board of Ophthalmology
Membership	American Society of Retinal Surgeons, American Academy of Ophthalmology, Association For Research In Vision and Ophthalmology, American Society of Cataract and Refractive Surgery, American Medical Association, Southern Medical Association

Location

Clinic	250 State Farm Parkway Birmingham, AL 35209 (205) 943-4600
Hospital Affiliation	UAB Callahan Eye Hospital

Callahan Community Physician



Kathleen Gee, MD

Overview

Specialties	Ophthalmology
Subspecialties	Comprehensive
Gender	Female

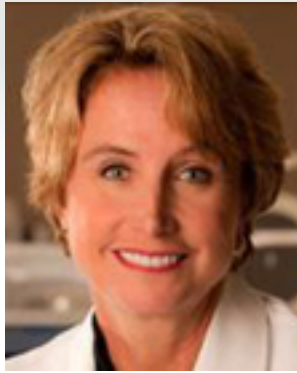
Credentials

Medical Education	Residency - University of Alabama at Birmingham Callahan Eye Hospital, 2005-2008 Internship - Baptist Health System, 2004-2005 Medical School - University of Alabama School of Medicine, 2004
Certifications	American Board of Ophthalmology

Location

Clinic	1009 Montgomery Hwy, Suite 200 Birmingham, AL 35216 (205) 397-9400
Hospital Affiliation	UAB Callahan Eye Hospital

Callahan Community Physician



Sarah J. Hays, MD

Overview

Specialties	Ophthalmology
Subspecialties	Comprehensive
Conditions & Treatments	Refractive Surgery, Lasik
Gender	Female

Credentials

Medical Education	Fellowship - Williamson Eye Clinic, 1983-1984 Residency - University of Alabama at Birmingham Callahan Eye Hospital, 1980-1983 Internship - University of Alabama School of Medicine, 1979-1980 Medical School - University of Alabama School of Medicine, 1979
Certifications	American Board of Ophthalmology
Membership	Alabama State Medical Society, Jefferson County Medical Society

Location

Clinic	One West Lakeshore Drive, Suite 220 Homewood, AL 35209 (205) 941-2020
Hospital Affiliation	UAB Callahan Eye Hospital



Christopher L. Kelly, MD

Director of UAB Callahan Eye Hospital Medical Board

Overview

Specialties	Ophthalmology
Subspecialties	Comprehensive
Conditions & Treatments	Cataract and Refractive Surgery
Gender	Male

Credentials

Medical Education	Residency - Tulane University, 1975-1978 Internship - University of Alabama at Birmingham Callahan Eye Hospital, 1974-1975 Medical School - University of Alabama School of Medicine, 1974
Certifications	American Board of Ophthalmology

Location

Clinic	1830 14th Avenue South Birmingham, AL 35233 (205) 933-2250
Hospital Affiliation	UAB Callahan Eye Hospital

Callahan Community Physician



Stephen J. Kelly, MD

Clinical Assistant Professor

Overview

Specialties	Ophthalmology
Subspecialties	Comprehensive
Gender	Male

Credentials

Medical Education	Residency - Hamilton Eye Institute/The University of Tennessee, 2005-2008 Internship - Baptist Health Systems of Alabama, 2004-2005 Medical School - University of Alabama School of Medicine, 2004
Certifications	American Board of Ophthalmology

Location

Clinic	1830 14th Avenue South Birmingham, AL 35205 (205) 933-2250
Hospital Affiliation	UAB Callahan Eye Hospital

Callahan Community Physician



John A. Long, MD

Clinical Associate Professor

Overview

Specialties	Ophthalmology
Subspecialties	Oculoplastics
Conditions & Treatments	Oculofacial and Reconstructive Surgery
Gender	Male

Credentials

Medical Education	Fellowship - University of California at Los Angeles (Jules Stein Eye Institute), 1987-1988 Residency - University of California at Los Angeles (Jules Stein Eye Institute), 1984-1987 Internship - Lacrosse Lutheran Hospital, 1983-1984 Medical School - University of Iowa College of Medicine, 1979
Certifications	American Board of Ophthalmology
Membership	American Society of Oculoplastic and Reconstructive Surgery, American Society of Cosmetic Surgery

Location

Clinic	1000 South 19th Street Birmingham, AL 35205 (205) 930-0599
Hospital Affiliation	UAB Callahan Eye Hospital
Other Hospital Affiliation	UAB Hospital

Callahan Community Physician



Marc A. Michelson, MD

Associate Clinical Professor

Overview

Specialties	Ophthalmology
Subspecialties	Cornea
Conditions & Treatments	LASIK, Laser Cataract Surgery
Gender	Male

Credentials

Medical Education	Fellowship - Wills Eye Hospital, 1979-1980 Residency - University of Alabama at Birmingham Callahan Eye Hospital, 1976-1979 Internship - University of Alabama at Birmingham (Internal Medicine), 1975-1976 Medical School - University of Alabama School of Medicine, 1975
Certifications	American Board of Ophthalmology
Membership	International Association for Training and Research In Ophthalmology Surgery, American Society of Cataract and Refractive Surgery, American Academy of Ophthalmology, Royal Society of Medicine, Castroviejo Society, International Society of Refractive Surge

Location

Clinic	1201 11th Avenue South, Suite 501 Birmingham, AL 35205 (205) 969-8100
Hospital Affiliation	UAB Callahan Eye Hospital
Other Hospital Affiliation	UAB Hospital



Robert E. Morris, MD

Clinical Associate Professor

Overview

Specialties	Ophthalmology
Subspecialties	Retina
Conditions & Treatments	Retinal and Vitreous Diseases, Eye Injuries, Macular Surgery
Gender	Male

Credentials

Medical Education	Fellowship - University of Cologne and Bascom Palmer Eye Institute, 1976-1978 Residency - University of Alabama at Birmingham Callahan Eye Hospital, 1973-1976 Medical School - University of Alabama School of Medicine, 1973
Certifications	American Board of Ophthalmology
Membership	American Academy of Ophthalmology, Alabama Academy of Ophthalmology, Retina Society, Vitreous Society, Machemer Society, International Society of Ocular Trauma, The Association For Research In Vision and Ophthalmology, Association For Education In Rehabil

Location

Clinic	1201 11th Avenue South, Suite 300 Birmingham, AL 35205 (205) 933-2625
Hospital Affiliation	UAB Callahan Eye Hospital
Other Hospital Affiliation	UAB Hospital



Sara M. Mullins, MD

Clinical Instructor

Overview

Specialties	Ophthalmology
Subspecialties	Comprehensive
Gender	Female

Credentials

Medical Education	Residency - UAB Hospital, Ophthalmology , 2010-2013 Internship - Baptist Medical Center - Princeton , 2009-2010 Medical School - LSU Health Sciences Center , 2005-2009
--------------------------	---

Location

Clinic	1830 14th Avenue South Birmingham, AL 35233 (205) 933-2250
Hospital Affiliation	UAB Callahan Eye Hospital

Callahan Community Physician



Matthew H. Oltmanns, MD

Clinical Instructor

Overview

Specialties	Ophthalmology
Subspecialties	Retina
Gender	Male

Credentials

Medical Education	Fellowship - University of Alabama at Birmingham/Retina Specialists of Alabama, 2010-2012 Residency - University of Florida, 2007-2010 Internship - Riverside Regional Medical Center, 2006-2007 Medical School - Eastern Virginia Medical School, 2006
--------------------------	--

Location

Clinic	1201 11th Avenue South, Suite 300 Birmingham, AL 35205 (205) 588-2500
Hospital Affiliation	UAB Callahan Eye Hospital
Other Hospital Affiliation	UAB Hospital

Callahan Community Physician



John S. Owen, MD

Overview

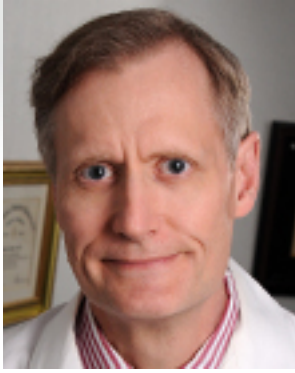
Specialties	Ophthalmology
Subspecialties	Comprehensive
Conditions & Treatments	Pediatric Ophthalmology
Gender	Male

Credentials

Medical Education	Fellowship - Indiana University, 1985-1986 Residency - University of Alabama at Birmingham Callahan Eye Hospital, 1982-1985 Internship - Carraway Methodist Medical Center, 1981-1982 Medical School - University of Alabama School of Medicine, 1981
Certifications	American Board of Ophthalmology
Membership	American Academy of Ophthalmology

Location

Clinic	1 Independence Drive, Suite 700 Birmingham, AL 35209 (205) 250-6042
Hospital Affiliation	UAB Callahan Eye Hospital
Other Hospital Affiliation	UAB Hospital



John S. Parker, MD

Clinical Assistant Professor

Overview

Specialties	Ophthalmology
Subspecialties	Cornea
Conditions & Treatments	Cornea and External Disease, Laser Correction
Gender	Male

Credentials

Medical Education	Fellowship - The Wilmer Eye Institute at Johns Hopkins University, 1990-1991 Residency - University of Alabama at Birmingham Callahan Eye Hospital, 1987-1990 Internship - University of Alabama at Birmingham Callahan Eye Hospital, 1986-1987 Medical School - Louisiana State University School of Medicine, 1986
Certifications	American Board of Ophthalmology

Location

Clinic	700 18th Street South, Suite 503 Birmingham, AL 35233 (205) 933-1077
Hospital Affiliation	UAB Callahan Eye Hospital
Other Hospital Affiliation	UAB Hospital

Callahan Community Physician



Darrell Prestidge, DO

Overview

Specialties	Ophthalmology
Subspecialties	Comprehensive
Gender	Male

Credentials

Medical Education	Residency - Alton Ochsner Medical Foundation, 1996-1999 Internship - Alton Ochsner Medical Foundation, 1995-1996 Medical School - West Virginia School of Osteopathic Medicine, 1995
--------------------------	--

Location

Clinic	644 2nd Street NE, Suite 201 Alabaster, AL 35007 (205) 621-3437
Hospital Affiliation	UAB Callahan Eye Hospital



Mathew R. Sapp, MD

Clinical Assistant Professor

Overview

Specialties	Ophthalmology
Subspecialties	Retina
Conditions & Treatments	Diabetic Eye Disease, Macular Disease, Retinal Detachment Repair, Ocular Trauma
Gender	Male

Credentials

Medical Education	Fellowship - Retina Specialists of Alabama, 2006-2008 Residency - University of Alabama at Birmingham Callahan Eye Hospital, 2003-2006 Internship - Baptist Health System, 2002-2003 Medical School - University of Alabama School of Medicine, 2002
--------------------------	---

Location

Clinic	1201 11th Avenue South, Suite 300 Birmingham, AL 35205 (205) 588-2500
Hospital Affiliation	UAB Callahan Eye Hospital
Other Hospital Affiliation	UAB Hospital

Callahan Community Physician



David A. Skier, MD

Overview

Specialties

Ophthalmology

Subspecialties

Comprehensive, Oculoplastics

Conditions & Treatments

General Ophthalmic and Laser Surgery, Ophthalmic Plastic Surgery

Gender

Male

Credentials

Medical Education

Residency - University of Alabama at Birmingham Callahan Eye Hospital, 1987-1990

Internship - St. Joseph's Hospital, 1986-1987

Medical School - Syracuse College of Medicine at The State University of New York, 1968

Certifications

American Board of Ophthalmology

Location

Clinic

1830 14th Avenue South

Birmingham, AL 35205

(205) 933-8273

Hospital Affiliation

UAB Callahan Eye Hospital

Other Hospital Affiliation

UAB Hospital

Callahan Community Physician



Andrew J. Velazquez, MD

Overview

Specialties	Ophthalmology
Subspecialties	Cornea
Conditions & Treatments	Cornea Disease and Refractive Surgery
Gender	Male

Credentials

Medical Education	Fellowship - Duke University Medical Center, 2002-2003 Residency - University of Florida (Shands Hospital), 1999-2002 Internship - Baptist Medical Center - Montclair, 1998-1999 Medical School - University of South Alabama College of Medicine, 1998
--------------------------	--

Location

Clinic	790 Montclair Road., Suite 100 Birmingham, AL 35213 (205) 592-3911
Hospital Affiliation	UAB Callahan Eye Hospital



Matthew G. Vicinanza, MD

Assistant Clinical Professor

Overview

Specialties	Ophthalmology
Subspecialties	Oculoplastics
Conditions & Treatments	Oculofacial and Reconstructive Surgery, Orbital and Reconstructive Surgery
Gender	Male

Credentials

Medical Education	Fellowship - University of Alabama at Birmingham Callahan Eye Hospital, 2004-2005 Residency - Vanderbilt University Medical Center Eye Institute, 2001-2004 Internship - New York Hospital, 2000-2001 Medical School - Syracuse College of Medicine at The State University of New York, 2000
Certifications	American Board of Ophthalmology
Membership	The American Society of Oculoplastics and Reconstructive Surgery

Location

Clinic	1000 19th Street South Birmingham, AL 35205 (205) 930-0599
Hospital Affiliation	UAB Callahan Eye Hospital
Other Hospital Affiliation	UAB Hospital